

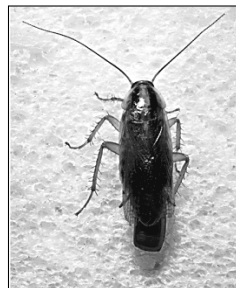
“Males are the most commonly captured, yet these are the least important trap catch.”

Bill Robinson

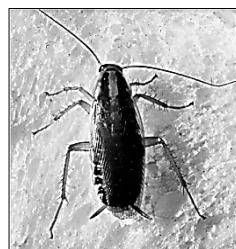
If you're simply counting the number of (German) cockroaches in the sticky traps you placed in that kitchen or restaurant, you're missing a lot of useful information. The next time you open that sticky trap, pay close attention to what you've got and not just how many.



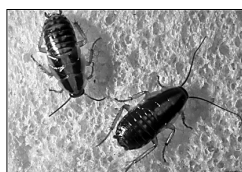
Males - These are the most commonly captured; they move far and randomly from their harborage every night. Large numbers of them in a trap may indicate an infested harborage or simply a food source is nearby. These are the least important trap catch.



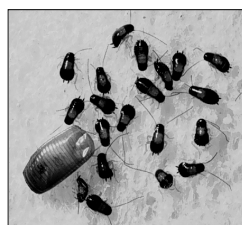
Females carrying an eggcase - This is the most uncommon individual captured, but the most important. Because females carrying an eggcase do not move far from their harborage, when they are in a trap it indicates that an infested harborage is close by.



Females without an eggcase - This is also an important indicator of an infested harborage close to the trap. During the 5 or 6 days between eggcase development, females search for food and water close to their harborage. Females have a broad abdomen, while in males the abdomen is long and slender.



Large nymphs - These are often captured in large numbers in traps, but they may not be a good indication of a harborage nearby. These individuals move a long distance from their harborage every night.



Small nymphs - These are rarely captured in traps, but they are a good indication of a harborage nearby. These individuals do not move far from their harborage and the presence of small nymphs or an eggcase in the trap means there is a harborage close to the trap.



We took the tablets out so you don't have to



Up until recently, you couldn't find a better cockroach attractant than the tablet accompanying the Lo-Line cockroach monitor. The tablet is so powerful, it transforms the Lo-Line monitor into a control device, well suited for sensitive accounts like schools and daycare centers.

But some PMPs were concerned that the harmless food grade tablet might be consumed by a child or a pet, causing unnecessary worry by customers. B&G is pleased to announce a new process of imbedding the powerful food attractant under the glue that delivers up to 25% better trap performance and **eliminates** the tablet.

Of course, even powerful food attractants can't prevent cockroaches from escaping common tee-pee style traps without the special ramps you'll find in the Lo-Line insect trap.



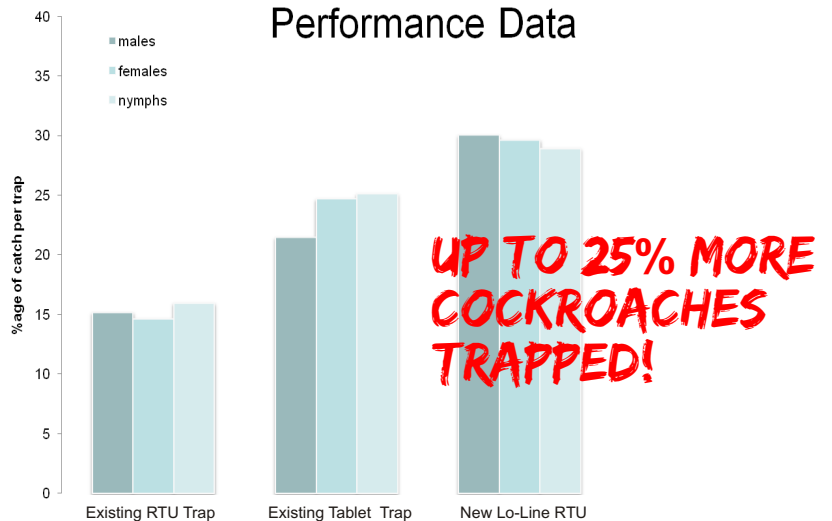
Only the Lo-Line has special 30° & 45° ramps that prevent cockroach escapes common to standard tee-pee type traps.

University of Wales research concluded that tee-pee style traps permitted up to 50% of trapped cockroaches to escape. Find out more...



[Email rheiney@bgequip.com](mailto:rheiney@bgequip.com) for free sample

Performance Data



Test results prove new Lo-Line RTU out performs the tablet based Lo-Line

For technical assistance, please contact:

SE USA	Claude Thomas, PhD.	904-545-7125
NE USA	David Mathis	607-760-1661
Mid-West	Robert Heiney	678-688-5601 x131
West USA	Angel Cotton Associates	562-989-2400
Asia	William H. Robinson, PhD	540-382-9238

cthomas@bgequip.com
dmathis@bgequip.com
rheiney@bgequip.com
jcotton@angel-cotton.com
brobinson@bgequip.com

