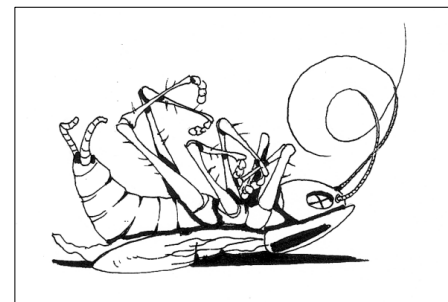




**Gel baits are an effective control strategy for cockroaches—when applied properly.** Baits should be applied to (or near) infested harborages, and be combined with a general ‘clean-up’ to remove food competition around the placements. But most important, the size (amount of bait) of each placement must be enough to feed the females (they eat the most), males, and nymphs in the adjacent harborage. Most labels recommend that gel bait placements are one-quarter to one-half gram—but that is barely enough. Applying less does not save money—it reduces efficacy.

**Bait Placements.** To be effective, apply the same amount of gel bait at each harborage site or crack-and-crevice you’re treating. A bait placement less than one-quarter gram will be easily consumed by 10 females, 20 males, and 20 nymphs in 24 hours! If the harborage is infested, this number of cockroaches is not difficult.



Be consistent when you pull the trigger on the bait gun. The objective is to deliver the correct size of the placement every time. If you use the B&G Bait Gun, you can dial it to setting #4 and you’ll get the same amount of bait at each trigger-pull.

**Bait Myths.** There are several myths that have been linked to gel baits. The two presented below are the most misleading and badly in need of ‘busting’.

**Myth:** *After a few days a ‘skin’ forms on the surface of gel baits and it prevents small nymphs from feeding on the bait.*

**Fact:** This is not true. Small nymphs (including first-stage nymphs) can feed on gel baits that are 3 to 10 days old and have a thick surface ‘skin’.

Gel baits have a large water content that accounts for the initial attraction of cockroaches. Baits lose about 50% of this moisture within 48 hours after application. [This large water loss essentially doubles the concentration of active ingredient in the placement.] The rapid loss of water causes the surface to thicken. The entire placement may slightly shrink in size. The surface ‘skin’ on the gel reduces any further water loss, but it does not prevent cockroaches from feeding.

**Myth:** *After several weeks baits become hard and are not fed on by cockroaches.*

**Fact:** This is not true. Gel bait placements that have become relatively hard (and appear dry), or as much as 10-months old can be eaten by cockroach adults and nymphs.

Gel bait formulations remain quite stable after their initial water loss. But they respond to the relative humidity in the surrounding air, and gain and lose moisture with their surroundings. Baits retain their food value and attractiveness to cockroaches. Cockroaches encountering bait placements that are several days or weeks old (or even months) are still likely to feed on them.

# Dial '4' for dead roaches

**The unique dosing feature of the Multi-Dose™ bait gun puts you in control of bait placements!**



What setting do you use on your bait gun?

**6 settings from light to heavy help you control costs and meet label specs!**

Have you ever been frustrated with bait applicators that make it difficult to apply the correct amount of bait? The Multi-Dose™ bait gun has **6 different settings** to **put you in control** of the amount of bait placed.

Technician **training** is **easier** when you can specify a dose setting to be used with a specific bait. Just select a setting and give the trigger a complete pull to give you the right amount of bait every time. Match settings with your bait for label adherence and consistency in application.

Dose settings make cost control and service pricing easier as well.

The Multi-Dose™ bait gun is **heavy duty** and **reparable** for years of service. Order from your distributor today!

## Free Year Supply of Glue Boards!



**Finally! An insect light trap built to compete against light from windows and overhead fluorescents.** 100 watts of UV power gives you a big edge over flies in your

accounts. You get 262 sq/in of glue board trapping surface for quick results on inside fly problems. Buy a Matrix - get a 24 pack (year's supply) of glue boards **FREE!** Order now while supplies last.

Send original invoice to: B&G Equipment Co., Attn: Free ILT GB Offer Dept., 135 Region South Dr., Jackson, GA 30233. PMPs only. Offer may be withdrawn at any time. We reserve the right to limit quantities. Offer expires: 12/31/2007

## The B&G Aerosol Delivery System How we improved on a great idea...

- Fast, easy installation on your aerosols
- 3 short steps to use: great new can clamp design
- Tangle resistant hose
- Light weight acetyl actuator handle
- No pinch valve
- Holster with belt attachment included
- Use virtually any aerosol with 2 ADU models



24000030 Waterbury™ compatible  
24000050 Whitmire™ compatible

**For technical assistance, please contact:**

**William H. Robinson, PhD 504-382-9238**

**Claude Thomas, PhD 904-545-7125**

**David Mathis 607-760-1661**

**Robert Heiney 678-688-5601**

